

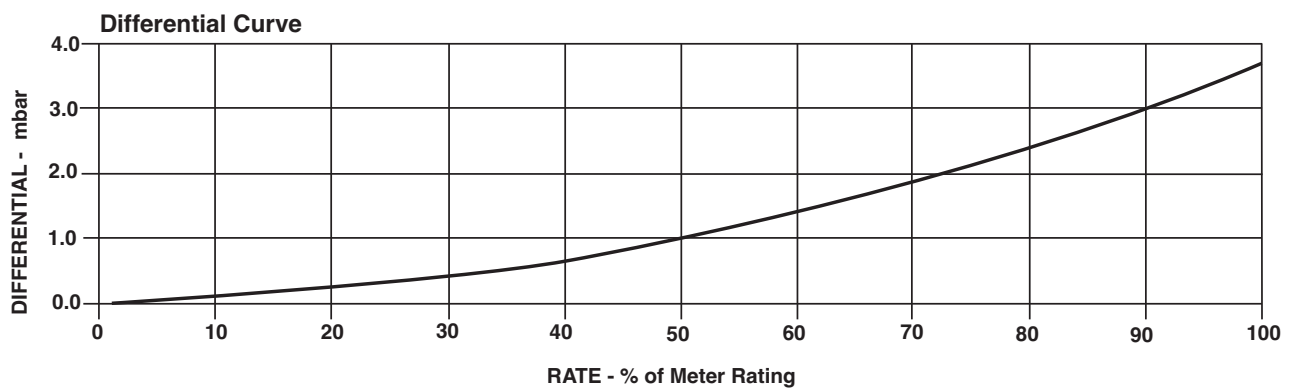
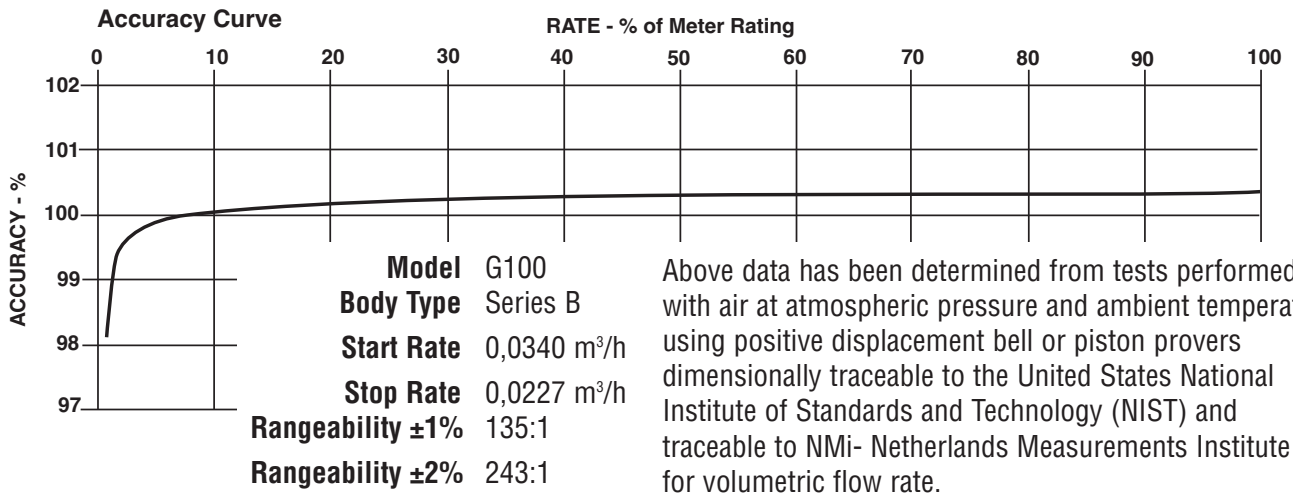


## G100 ROOTS® Meter

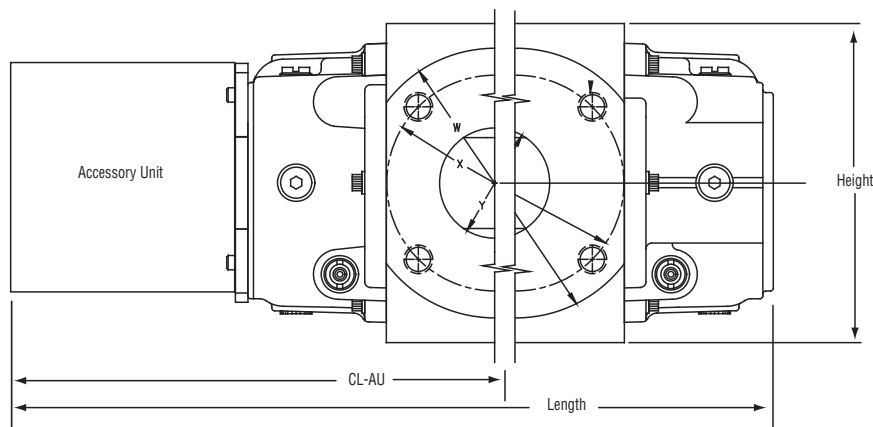
	<b>UNITS</b>	<b>Metric/DIN</b>	<b>UNITS</b>	<b>Metric/ANSI</b>
Temperature Range	deg. C	-40 to +70	deg. C	-40 to +70
Base Rating (Q Max.)	m <sup>3</sup> /h	160	m <sup>3</sup> /h	160
Max. Operating Pressure (MAOP)	bar	12	bar	12
Leak Test (125% MAOP)	bar	15	bar	15
Static Test (2 x MAOP)	bar	24	bar	24
Rangeability +/- 1%	ratio	135:1	ratio	135:1
Rangeability +/- 2%	ratio	243:1	ratio	243:1
Start Rate	m <sup>3</sup> /h	0,0340	m <sup>3</sup> /h	0,0340
Stop Rate	m <sup>3</sup> /h	0,0227	m <sup>3</sup> /h	0,0227
Flow Rate @ 1,25 mbar, Gas	m <sup>3</sup> /h	112,6	m <sup>3</sup> /h	112,6
Avg. Differential @ 100% Flow	mbar	3,7	mbar	3,7
Max. Pressurization Rate	kPa/sec	35	kPa/sec	35
Max. Operating Speed	rpm	2250	rpm	2250
Gear Ratio	ratio	953,125:1	ratio	953,125:1
Displaced Volume/Revolution	m <sup>3</sup>	0,001049	m <sup>3</sup>	0,00104
Drive Rate	m <sup>3</sup> /rev	1,0	m <sup>3</sup> /rev	1,0
Min. Odometer Reading	m <sup>3</sup>	0,020	m <sup>3</sup>	0,020
Odometer Turnover	yrs.	7,13	yrs.	7,13
Nominal Pipe Size	mm	80	mm	80
Flange-to-Flange	mm	172	mm	172
Flange Connection	DIN	DN 80	ANSI	150#FF
Bolts per Flange	qty.	8	qty.	4
Bolt Size <sup>1</sup>	mm	M16	in.	5/8 - 11
Flange Bolt Hole Depth	mm	23,8	mm	23,8
Bolt Torque: Lubricated/Non-Lub.	N-m	74/81	N-m	74/81
Restricting Orifice (120%)	mm	18,256	mm	18,256
Oil Capacity - Side Inlet	ml	37	ml	37
Oil Capacity - Top Inlet	ml	226	ml	226
Net Weight	kg	16	kg	16
Shipping Weight	kg	17	kg	17
Carton Size	cm	66 x 27 x 20	cm	66 x 27 x 20

**NOTES:**

<sup>1</sup> Bolt Length varies by application.



G100	Overall Length		Overall Height		Width (Flange/Flange)		Centerline to Accessory End (CL-AU)		Request Detailed Drawing Number
	inches	mm	inches	mm	inches	mm	inches	mm	
	18-7/64	460	6-31/32	177	6-3/4	172	10-25/64	264	D055451-000



**Roots Meters & Instruments  
Dresser, Inc.**

16240 Port Northwest Drive  
Houston, Texas 77041-2645 USA  
Inside US Ph: 800.521.1114      Fax: 800.335.5224  
Outside US Ph: 832.590.2303      Fax: 832.590.2494



[www.dresser.com](http://www.dresser.com)